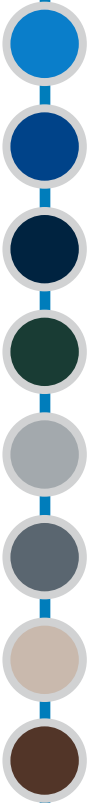


# *Automatic Pool Covers, Inc.*



***Your Safest Option***

# Safety First

## Fabric Colors

Light Blue

Royal Blue

Navy Blue

Forest Green

Light Gray

Charcoal Gray

Beige

Brown

### Automatic Covers Make Sense

There's nothing more important than safety when it comes to owning a pool. That's why the AutoGuard® safety cover, manufactured by Automatic Pool Covers, Inc., offers you the highest level of security and peace of mind. The AutoGuard® eliminates access to the pool water and, when used properly, can withstand thousands of pounds of surface weight.

- Safety, Solar, and Winter cover all-in-one
- Pool chemicals last TWICE as long
- Saves up to 70% on heating costs
- Reduces pool-cleaning time
- Extends the life of pool equipment
- Reduces pool water evaporation
- Extends swimming season



### The AutoGuard® - Simple, Flexible and Reliable

The AutoGuard® safety cover operates with the simple push of a button or the turn of a removable key. The system is designed to fit almost any shape pool, and is strong, durable and warranted to last.

- SmartMotion™ Control reduces user maintenance.
- PowerTouch® touch pad operates with your personal code!
- Fast – the average pool cover opens in less than 45 seconds.
- Strong – delivers over 1500 pounds of torque.
- Coated (18 oz.) vinyl fabric has industry's longest life expectancy.
- Commercial grade hardware is standard on all units.
- Locking split-coupler allows for easy maintenance.
- Meets or exceeds industry safety standards (ASTM - 1346).

**Many options available!**



# Under Track

Looking for that timeless design in your new pool? The under track application incorporates the AutoGuard® safety cover into a concealed track which is seamlessly fastened to the pool wall or secured in a track retainer system.



*Fiberglass pool, deck on deck retainer*



*Gunitite pool with gunitite retainer*

The advantages of the under track system are that it removes the cover tracks from your pool deck, gives you more options for the edges of the pool, and allows for greater flexibility in creating an attractive lid.

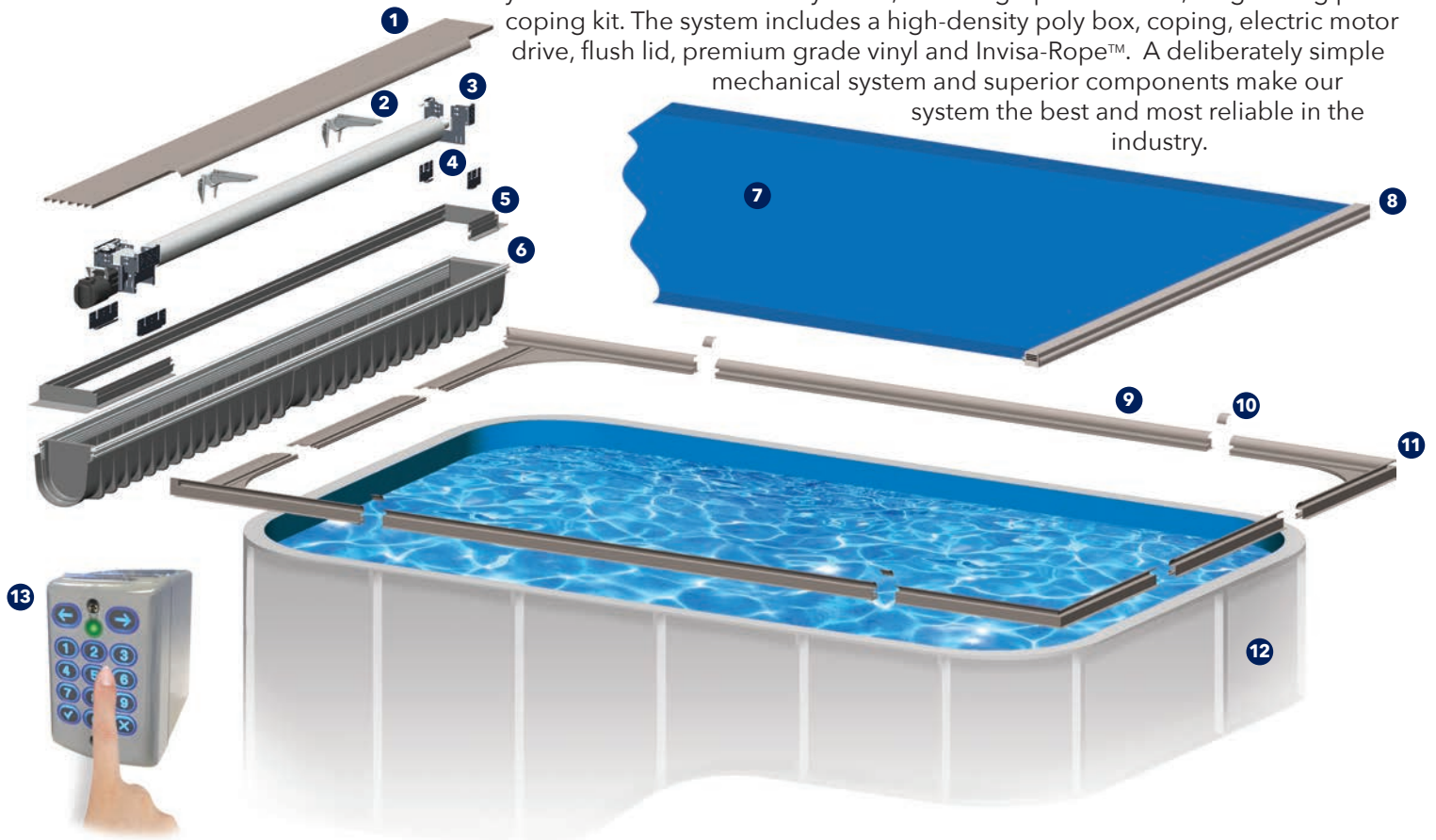


*Vinyl liner with under track coping and flush lid*



*Vinyl liner with under track coping and aluminum lid*

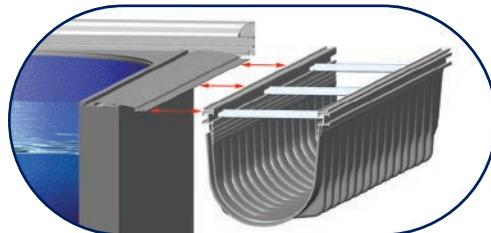
THREE•SIXTY•FIVE™ is a complete safety cover system for those who want the best for their swimming pool investment. This system is a unique combination of year-round automatic safety cover, and a high-performance, long-lasting pool coping kit. The system includes a high-density poly box, coping, electric motor drive, flush lid, premium grade vinyl and Invisa-Rope™. A deliberately simple mechanical system and superior components make our system the best and most reliable in the industry.



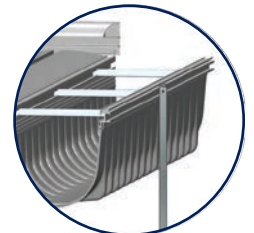
- 1 Flush Walk-On Lid
- 2 HD2 - Removable Lid Bracket
- 3 AutoGuard® Drive Mechanism
- 4 Drop & Lock Mounting Brackets
- 5 Quick-Clip Box Riser
- 6 Slide-On Polymer Box
- 7 Premium Vinyl
- 8 Strong Lead Edge
- 9 Simple One-Piece Coping
- 10 Clip-On Coping Splice
- 11 48" x 48" Corner - Assemblies Available in 3" Chop, 6" and 24" Radius, 90° Corner
- 12 Compatible with all 4" & 5" Flange Pool Walls  
Max Pool Width: 24' Max Pool Length: 50'
- 13 PowerTouch™ Security Control Pad



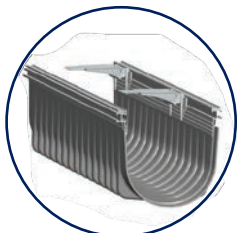
One-Piece Encapsulated Coping  
Concrete Coping Forms Available



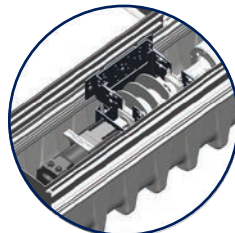
Wall Cap Supports  
Slide-On Poly-Box



Adjustable Stake Braces for  
Precise Leveling During Pre-Pour



Removable Lid Brackets  
Support Non-Skid Lid



Drop & Lock Brackets Provide  
Accurate Installation



Water Resistant Motor with  
Quick Connect Plug



# Top Track

## **Recessed AutoGuard®**

The AutoGuard® automatic pool cover top track system can be designed as a part of nearly any pool shape. The cover's low profile track is securely mounted to the top of the pool deck. The leading edge of the cover is strong and bow resistant while gliding the cover open and closed.

The cover opens into a recessed housing, visually removing the cover roll-up from the pool area. The system is covered with a sturdy lid that provides easy access to all system components.



*Fiberglass pool, top track,  
aluminum lid with lid triangles*



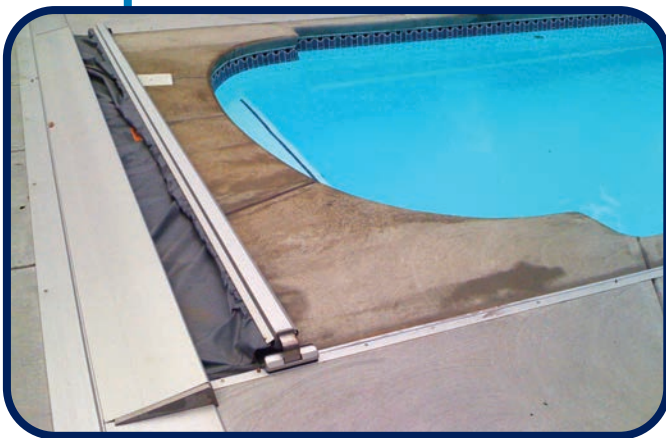
*Vinyl liner top track*

## **Flush Track AutoGuard®**

The AutoGuard® automatic pool cover can be incorporated flush into the concrete deck.



*Flush track with bronze extrusions*



*Fiberglass pool with flush track*

# Deck Mount

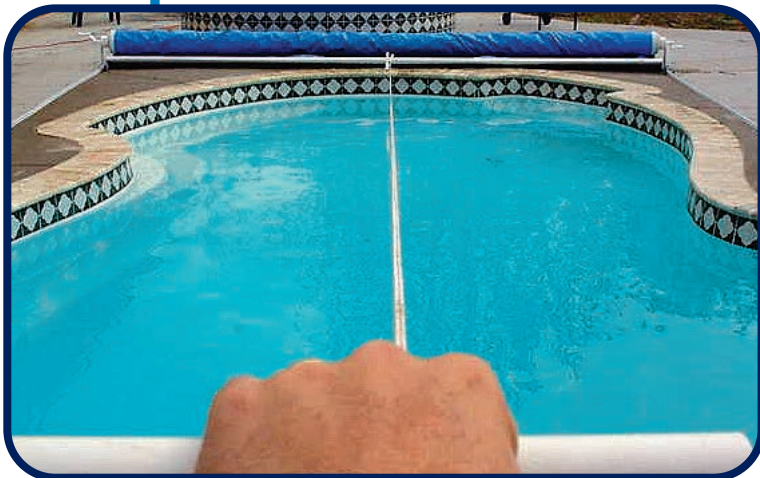
## **Deck Mount AutoGuard**

The AutoGuard® automatic pool cover can be installed on top of the pool deck and hidden in a multi-purpose housing that is constructed out of 100% weather resistant PVC.

Deck mount applications are ideal for existing pools and pools that require the system to be installed above the pool deck.



*Gunite pool, top track with vinyl bench*



*Manual Guard on a fiberglass pool*

## **Manual Guard**

If your pool is less than 18 feet wide and shorter than 38 feet long, a manual safety cover may be a viable option. Simply pull the cover closed with an extended rope, and open the cover by turning a handle.



# Features & Options

## PowerTouch™ Control

Exclusive technology that revolutionizes pool cover use. SmartMotion utilizes user diagnostics that prevent cover overrun, system overload and more!



## Water Resistant Motor

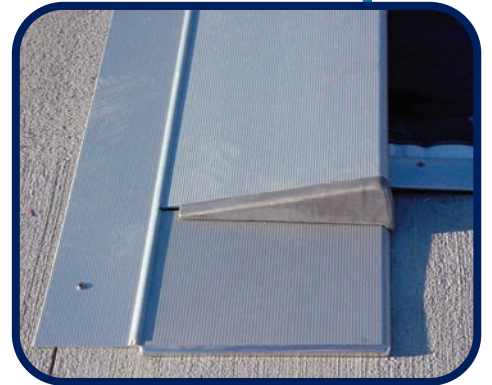
100% submersible 3/4 HP electric motor with Seal Technology™ delivers 1,500 lbs. of torque. Quick Connects make installation easy. Hydraulic units are also available.



## Lid Triangles

Protects and finishes the open gap between the lid and the lid ends.

Lid triangles are standard equipment on all top track systems.



## Stainless Guides

Standard equipment on all top track and under track systems.



## Lid Trays

Optional for under track systems only. Replaces a standard aluminum lid.



## Ladder Hinges

This optional equipment allows for the use of an internal ladder with your automatic pool cover system.



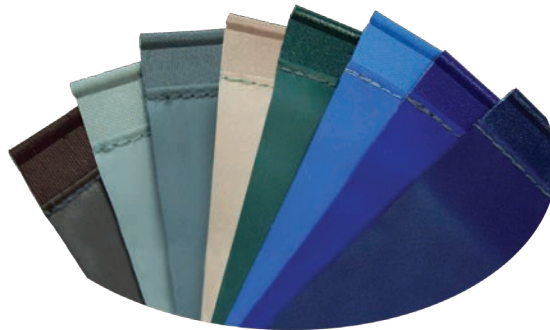
# Automatic Pool Covers' Products



*Top Track Carriage with Positive Stops*



*Strong Lead Edge Seals Out Debris*



*Premium Vinyl with  
Color Matched Hybrid Webbing*



*Exclusive Wayne Cover Pump*

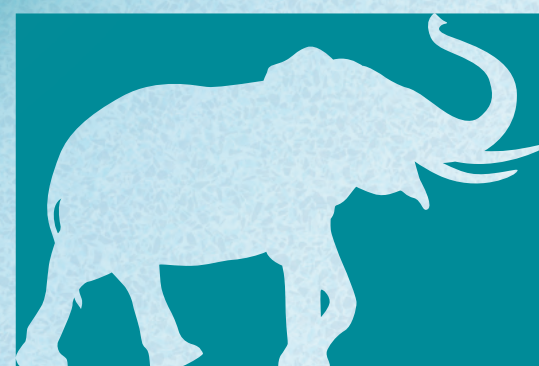


*Atlas Bracket Provides  
Superior Strength and Increased Versatility  
11" - 24" Options*



(800) 878-5789 • [www.APC-Mfg.com](http://www.APC-Mfg.com) • [sales@APC-Mfg.com](mailto:sales@APC-Mfg.com)





**LOOP-LOC**<sup>®</sup>  
THE ONE. THE ONLY.

#AskForTheElephant

# The 2023 Collection



Manual Safety Cover  
In accordance with ASTM Standard F 1346-91  
Made in the USA

[looploc.com](http://looploc.com)

POOL SAFETY COVERS

POOL LINERS

BABY-LOC

BACKYARD ACCENTS





## **A TRACK RECORD OF TRUST & SAFETY**

In 1978, Bill Donaton founded LOOP-LOC with five employees. In 2001, Bill's daughter, LeeAnn Donaton took over as President & CEO, and today LOOP-LOC boasts a 200,000 square foot headquarters in Hauppauge, New York with over 300 employees.

Bill continued to make safety improvements to LOOP-LOC covers. Most significant was LOOP-LOC's GAPGUARD® and SAFEDGE®, now known as CABLE-LOC™ Child Safety Intrusion Barriers, a plastic extrusion designed to close the gaps created where the edge of the cover meets a raised obstruction. For this breakthrough, he received U.S. Patent #4,982,457.

LOOP-LOC also takes the lead in bringing the safety issue to the forefront for consumers. For years, the industry considered safety a negative to be avoided. But by bringing safety to the front and center of LOOP-LOC advertising, the company showed that it could be a positive. The result was one of the most recognized advertising campaigns in the history of the pool and spa industry: "Bubbles the Elephant."

Under LeeAnn's guidance LOOP-LOC is now not only a leader in the Safety Pool Cover industry, but has re-invented the in-ground vinyl liner industry by producing some of the most luxurious and innovative liner patterns available in the market today. LOOP-LOC Luxury Liners are primarily exclusive patterns that cannot be found anywhere else in the world. LeeAnn has also been awarded a number of patents from solid safety swimming pool covers, to cover treatments and fencing products.

When Bill Donaton passed away in 2002, the industry lost a great leader and pioneer. But LOOP-LOC's focus on its mission is as strong as ever. In fact, the banner reading, "The quality of the cover you make today can save a life tomorrow." that Bill hung in the beginning still hangs in the LOOP-LOC plant to this day.

**Thank you for trusting us with the safety of your family for over forty five years.**

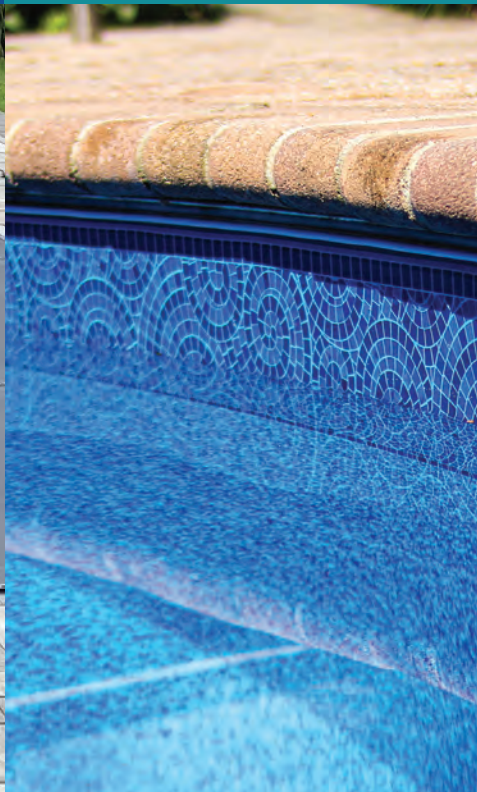
Made in the USA



POOL SAFETY COVERS



POOL LINERS



BABY-LOC

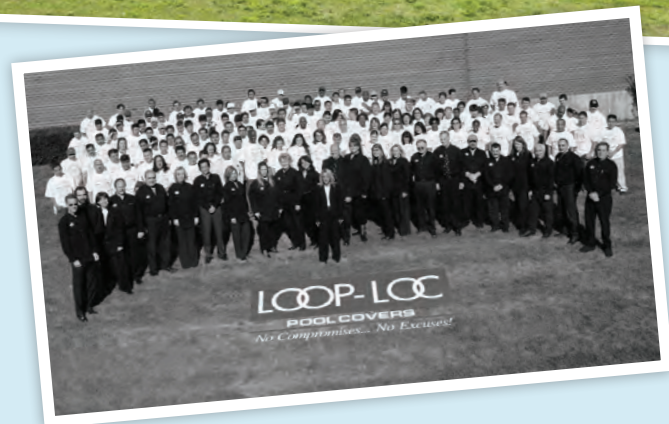


BACKYARD ACCENTS



# Committed to Your Family's Safety

45 Years and  
Counting!



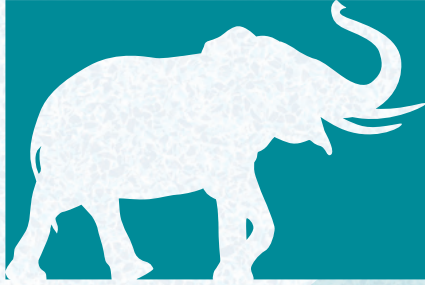
#AskForTheElephant





Manual Safety Cover  
In accordance with ASTM  
Standard F 1346-91



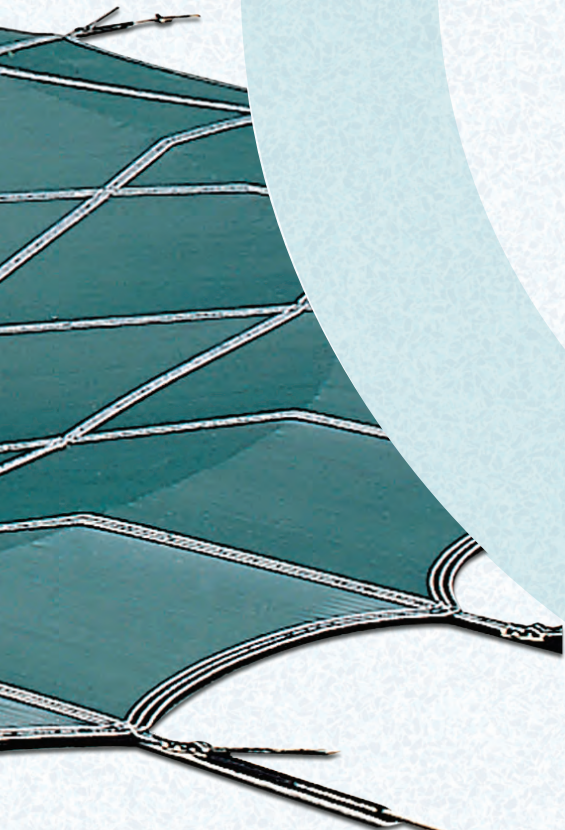


**LOOP-LOC**<sup>®</sup>  
THE ONE. THE ONLY.

# Safety Pool Covers

The 2023 Collection

#AskForTheElephant







#AskForTheElephant

# Safety Swimming Pool Covers

## Putting safety on lock.

LOOP-LOC® puts an unbreakable “lock” on your pool to protect your family. Only LOOP-LOC is available with the patented CABLE-LOC™ and GAPGUARD® Child Safety Intrusion Barriers, which close the dangerous gaps created where raised obstructions meet the cover’s edge, significantly reducing the risk of a child or pet slipping through.

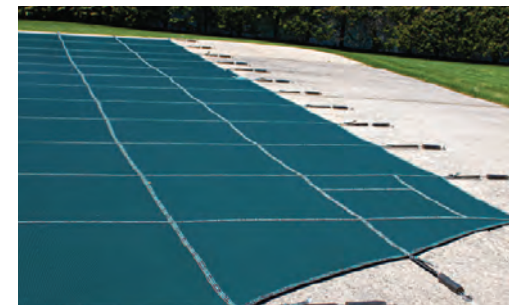
## The perfect fit-no matter what.

LOOP-LOC’s exclusive Computer-Aided Design ensures a perfect, custom fit for any shape or size pool. From a simple square to the most complex installation, LOOP-LOC can manufacture a custom cover with the perfect fit for any pool or spa.

(Please note: “Bubbles” the elephant is seen standing on the mesh cover as a demonstration of the substantial amount of weight that LOOP-LOC covers can withstand in the event of an emergency. Contact with sharp-hoofed animals will damage the covers.)



**BEFORE:** This solid waterbag cover is a slimy, unsafe mess after just a few rains.



**AFTER:** A LOOP-LOC safety swimming pool cover stays beautifully dry and safe in any weather.





Manual Safety Cover  
In accordance with ASTM  
Standard F 1346-91

### **Dry and beautiful, even when the weather isn't.**

LOOP-LOC always stays tight, clean and beautiful on your pool. Unlike a saggy, unsightly waterbag cover that becomes a dangerous, slippery swamp after just a few rains, LOOP-LOC's super dense mesh allows rain to drain through. The cover stays dry and beautiful in any weather.

### **Easy to install and remove.**

LOOP-LOC's unique anchoring system makes it easy to re-install and remove, so you can spend less time uncovering and more time enjoying your pool or spa.

Protect your family with the **only mesh pool cover** that passed the elephant test:

### **Long lasting with minimal maintenance.**

By following LOOP-LOC's simple care and maintenance instructions for your mesh or solid cover, you'll be able to open your pool with minimal cleaning and keep your cover in the best shape, year after year. Unlike solid waterbag covers, a LOOP-LOC cover requires no pumping, scrubbing or heavy maintenance.



# **“THE ELEPHANT™ COVER”**





Manual Safety Cover  
In accordance with ASTM  
Standard F 1346-91

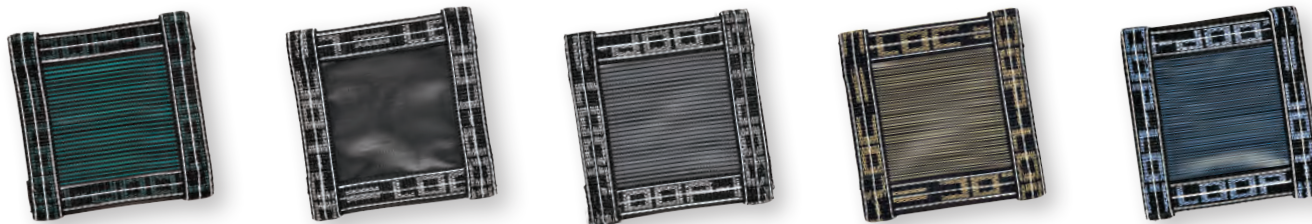


## SUPER DENSE MESH

Super dense mesh available in **Green or designer Black, Gray, Tan or Blue** to complement your outdoor decor.

## UNIQUE ANCHORS

Offer ultimate protection and fit flush with the deck.



LOOP-LOC® covers not only meet, but exceed ASTM standards for Safety Swimming Pool Cover F 1346-91. To show our commitment and dedication to the safety and security of your family, LOOP-LOC covers have undergone extensive outside testing through Underwriters Laboratories (UL) and have earned the seal of approval for safety swimming pool covers.



# SUPER DENSE MESH DESIGNER COLOR SERIES

Protect your family with **the only mesh pool cover** that passed the elephant test.



#AskForTheElephant

You'll probably never need a pool cover safe and strong enough to support the weight of "Bubbles," the African Elephant. But imagine how safe you'll feel owning the only pool cover that's proven it can: the LOOP-LOC® Safety Swimming Pool Cover

- Allows rain and melting snow to easily drain through
- Blocks virtually all sunlight



**Black** Super Dense Mesh



**Blue** Super Dense Mesh



**Gray** Super Dense Mesh



**Tan** Super Dense Mesh



# There's only one LOOP-LOC®.

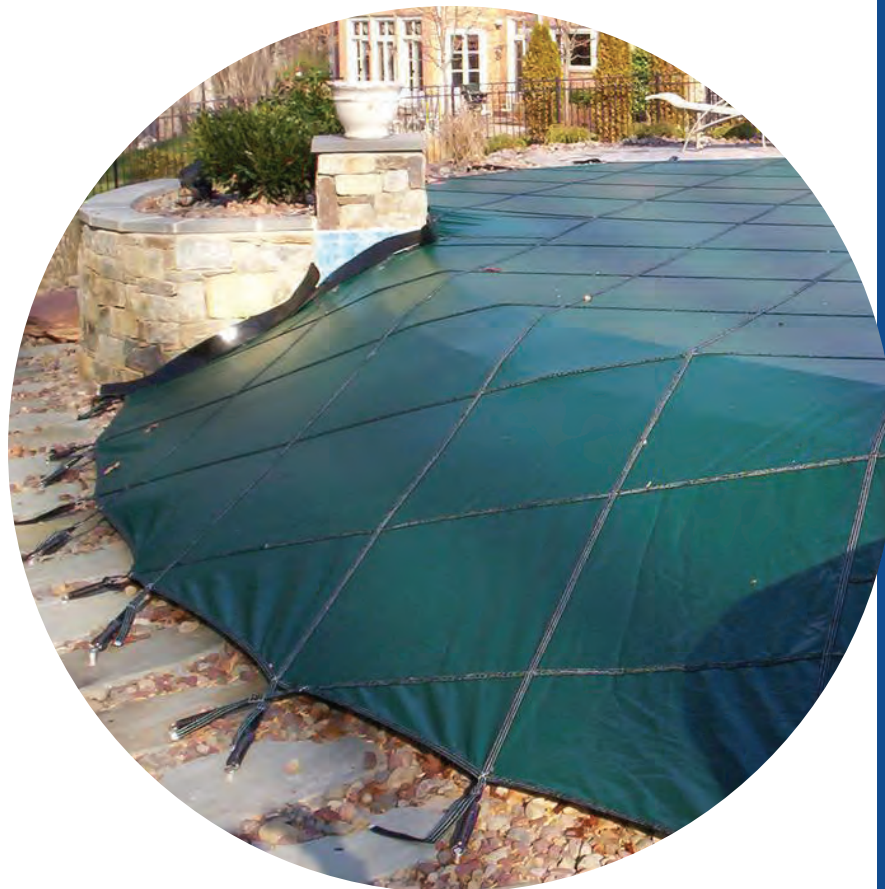
Here are 15 reasons why.

- 1 LOOP-LOC covers are **the only safety covers** to be awarded UL certification year after year.
- 2 Mesh construction **allows rain and melting snow** to drain right through.
- 3 Our covers are so durable, they are backed by a **15-year prorated warranty** and so safe, they may reduce your liability insurance.
- 4 The lightweight nature of our covers makes **installation and removal a breeze**.
- 5 Available in a **variety of designer colors**, our covers blend beautifully into any backyard, complementing your decor.





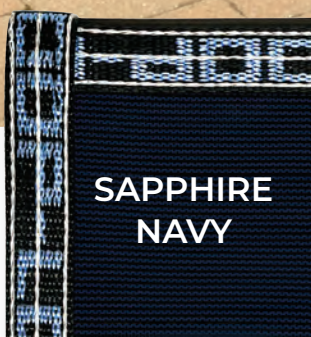
- 6 LOOP-LOC's patented CABLE-LOC™ and GAPGUARD® Child Safety Intrusion Barriers **close the gap created when a pool includes raised obstructions** located at the cover's edge.
- 7 The **polyester bonded thread** used in our covers is 30% stronger in thread size and produces a higher margin of safety in all seams (compared to our competitors).
- 8 Double-perimeter webbing and double thick straps give our covers an **incredibly high break strength**.
- 9 For superior weight-bearing capacity, we use extremely high-strength, **non-corrosive 302/304 grade stainless steel springs**.
- 10 **Unique brass anchors recess flush** with the deck when the cover is removed.
- 11 To ensure that **not a single stitch is missed**, we sew the webbing to the cover using contrasting white thread, instead of black.



- 12 We use 80% black yarn in our fabric for **superior UV stability**.
- 13 Chafe strips are manufactured with **exclusively virgin material -- not "regrind,"** which tends to stain decking.
- 14 **Non-corrosive aluminum tips** are double-notched for stability.
- 15 The large X-tacking on LOOP-LOC straps is sewn manually for **precise placement and maximum strength**.









# Aqua-Xtreme®

Maximum light blocking.  
Lightning-quick drainage.  
Ultimate convenience.

Imagine opening your pool in the spring and having it look almost as clean as the day you closed it. That's what you can expect from Aqua-Xtreme "Virtually Solid" mesh safety covers by LOOP-LOC®.

Our ultimate light-blocking fabric deters algae growth and enables lightning-quick draining. Unlike other light blocking covers, Aqua-Xtreme drains up to 80 gallons per minute without clogging. The unique, new weave is extra durable to give you the complete peace of mind that comes with owning a LOOP-LOC safety swimming pool cover.

- Ultimate light blocking to deter algae growth
- Super-strong, quick-draining mesh
- 50% lighter than solid covers for easy handling
- Available in Hunter Green, Sapphire Navy, Mojave Brown and Steel Gray to complement your backyard decor



Preview any LOOP-LOC Safety Cover  
with our Mirage Pool Visualizer at  
[looploc.com/mirage](http://looploc.com/mirage).



Manual Safety Cover  
In accordance with ASTM  
Standard F 1346-91

The Strong, Solid Safety Cover

# Ultra-Loc<sup>®</sup> III

## Quality you can trust - and see.

To show our commitment and dedication to the safety and security of your family, LOOP-LOC<sup>®</sup> covers have undergone extensive outside testing through Underwriters Laboratories (UL) and have earned the seal of approval for safety swimming pool covers.

Blends beautifully into  
any backyard decor.

Available in green or your  
choice of designer blue,  
mocha, and gray.



Strong, durable, and maintenance-free, ULTRA-LOC® III provides all of the superior light-blocking properties of a solid safety pool cover, backed by

**the quality only  
LOOP-LOC can  
deliver.**

- Premium coated vinyl material with enhanced 100% polyester rip-stop scrim.
- Fast, easy draining with optional mesh drainage panels.
- No scrubbing or maintenance required, unlike traditional solid water bag covers.
- Fits any pool or spa perfectly, from a simple square to a complex installation with a custom cover.
- LOOP-LOC covers not only meet, but exceed ASTM standards for Safety Swimming Pool Covers F 1346-91.

## Drains fast with optional **Mesh Drainage Panels**

Covers without drain panels block 100% of sunlight and come with an automatic pump, which must be used at all times to meet ASTM safety cover standards.



**Preview any LOOP-LOC Safety Cover  
with our Mirage Pool Visualizer at  
[looploc.com/mirage](http://looploc.com/mirage).**

# Commercial Covers

Keep your facility safe and save money with LOOP-LOC®

In the off-season, an empty, unsupervised commercial pool can be an invitation for disaster. Locked gates or fences alone have often proved ineffective in preventing children and pets from gaining access to the pool area.



## Aqua-LOC®

The **zipped-up** solution for obstructions and oversized pools.



Large commercial pools and pools with rails and other non-removable raised obstructions have always posed challenges for safety swimming pool cover installation. LOOP-LOC®'s patented AQUA-LOC treatment is easy to install, easy to use, and greatly reduces the need for strap-and-buckle treatments. Like all other LOOP-LOC products, AQUA-LOC meets all ASTM standards for safety covers.

### Durable Construction

1. YKK industrial zipper secures cover sections.
2. Black urethane UV coating protects zipper.
3. Stainless steel block prevents zipper from being opened.
4. Key-lockable cable secures block in place.



# LOOP-LOC® Specifications

## A track record of trust and safety.

Keeping your family safe means everything to us. That's why all of our products are made from top quality materials and are thoroughly tested to ensure they not only meet, but exceed ASTM standard F 1346-91.

### Super Dense Mesh

Polypropylene-extruded monofilament yarn: 525 denier in the warp and 595 denier in fill. 41 x 20 construction plus 80% black yarn and 20% green yarn for enhanced U.V. properties, 4.7 ounces per sq. yard.

### Aqua-Xtreme Mesh

Polypropylene-extruded, patented, double-layer weave technology to promote high water flow and highest shade values. Monofilament in the warp and combination of mono/fibrillated tape in fill direction, 86% black yarn and 14% colored yarns for enhanced U.V. properties, 6.7 ounces per sq. yard.

### Ultra-LOC® III

High adhesion coated vinyl with a woven rip-stop scrim, enhanced U.V. and mildew properties, 14 ounces per sq. yard.

### Webbing

1" wide polypropylene, polyester with nylon filler. Minimum break strength: 2,100 pounds single. To be used double-thick for minimum strap break-strength of 4,200 pounds. Minimum 90% black yarn. (Cotton, wool or other natural fibers treated or untreated are unacceptable for safety cover use.)

- **Extend the life of your pool** by reducing the need for repainting or replastering.
- **Increase your savings on water** because the pool doesn't need to be drained at the end of every season.
- Have the potential to **lower your liability and insurance premium.**
- **Help the environment.** Keeping the pool filled means you don't have to worry about disposing of chlorine and chemically treated water, an environmental hazard that many states are in the process of regulating.

### Chafing Strips

Under cover 1" minimum width, 20" to 36" long (depending on cover overlap) extruded solid, virgin vinyl 3/16" thick. All inside corners heavily padded.

### Safety Barrier/Gapguard

Solid, virgin vinyl, 3" extrusion for raised walls, etc., and 15" extrusion for raised steps as needed to meet (or exceed) ASTM Safety Standard F 1346-91. LOOP-LOC® Patent No. 4,982,457.

### Thread

Bonded Polyester – UVR. Size 138. Three rows of stitching all directions.

### Warranty

Safety cover will have a 15-year prorated warranty.

### Standard Springs

302/304 stainless steel, two draw-bar compression type with thick vinyl tubular deck-protective covers. For residential applications.

### Commercial Springs

Made from the same high quality material as our standard springs, 302/304 stainless steel. Draw-bar and coil wire diameter increased to handle larger load capacities with thick vinyl tubular deck-protective covers. For covers over 2,500 sq. ft. deck-protective covers. For commercial applications.

### Anchors

Brass, flush-mounted in deck with screw-type insert. 4,000 pound break strength at neck.

### Installation Tools

30" long steel rod, with notched end and plastic grip.

### Finished Cover

To have sections approximately 3' x 3'. (For residential rectangular pools only, cover may be made with approximately 5' x 5' sections.) All straps to be "X"-tacked at cover edge with stainless steel buckles and aluminum tips.





Unique solutions for one-of-a-kind pools

## Cable-LOC®

We've raised the bar on **raised wall installation.**

Installing LOOP-LOC® safety covers on pools with raised walls is now an easier and more beautiful experience. Our innovative new CABLE-LOC treatment features 33% fewer anchors, flexible anchor positioning for much faster installation, exceptional quality materials, and a sleek new look you will love!

1. New smaller-profile SAFEDGE® Safety Barrier is segmented to better adapt to walls.
2. Aircraft-quality stainless steel cable has 5,000 lb. break strength.
3. Maximum 18" anchor spacing.

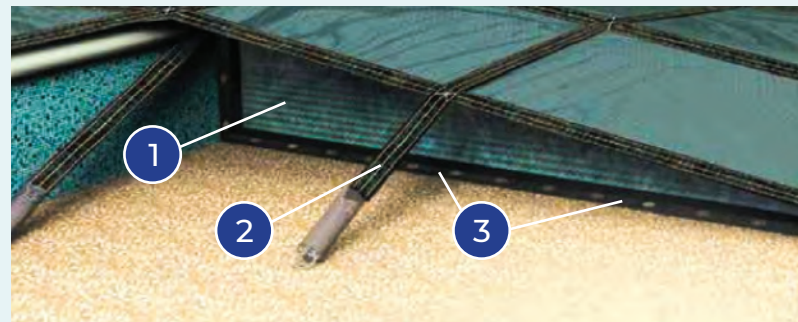


## Protect-A-GAP®


The safest, simplest way to close gaps created by raised spas.

LOOP-LOC's PROTECT-A-GAP technology is the perfect safety cover solution for raised spas, waterfalls, rises or any obstruction higher than 9", where a two-cover treatment is not desired. It is easy to install and can be "field fit" to provide the most secure gap barrier for each cover. Plus, the materials are flexible enough to provide a close fit on virtually any shape. With PROTECT-A-GAP, you can feel confident that your pool will remain safe and secure.

1. Triangular flap of mesh materials sewn to underside of cover.
2. Extrusion with multiple anchoring locations sewn to flap where it meets deck and raised obstruction.
3. Standard LOOP-LOC hardware installed at approximately 3' intervals, secures flap to deck and obstruction.







The only hole in your deck  
should be your pool.

INTRODUCING

# DECK-LOC<sup>®</sup>

The first **NO-DRILL anchor system** for composite decks.

Now you can install a pool cover on composite decking without drilling a single hole. DECK-LOC anchors secure in seconds by simply turning the clamps until they lock under the deck boards. Removing them for storage is just as easy, leaving the pool deck pristine and unscarred, because the only hole in your deck should be your pool.

- Manufactured in marine grade stainless steel.
- Made for composite decks with  $\frac{3}{8}$ " board spacing.

Patented under U.S. Patent application 16/200,929

